



มหาวิทยาลัยมหิดล  
มิ่งขวัญแผ่นดิน

# MU *NEW NORMAL*



After COVID-19



Nopraenue S. Dhirathiti  
Mahidol University

## 1 Tuition Fee Reduction

HEIs were advised to consider reducing around 10% of tuition fees for students and family affected by COVID-19

## 2 Online Infrastructure

HEIs were advised to fully migrate to online teaching and learning while necessary online infrastructure/equipments, e.g. online teaching platforms, free sims were provided by both HEIs and MHESI

# Government's COVID-19 Guidelines for HEIs

Virtual Mobility/Activities

Assessment Guidelines

Online Infrastructure

Tuition Fee Reduction

## 3 Assessment Guidelines

Issues of how students are to be assessed based on online teaching and learning as well as the shifting towards competency assessment as learning outcomes are encouraged by MHESI

## 4 Virtual Mobility/Activities

Most internationalization activities were advised to be continued via virtual platforms

# HEI Institutional Adjustments



## Students

Financial support/abrupt online learning adjustment



## Teaching Faculty and Staff

Online learning training and enforcement + virtual mobility and activities



## Research

Lab access, field research pending in some areas



## Campus Operation

Work from Home and close contact handling



## Finance

Subsidies and support to students and programmes



## Internal Communication

Fear and anxiety management, social media communication





# MU NEW NORMAL

After COVID-19



1

Routine work

2

IR Activities for  
New Normal

3

Joint Research Units

4

International students

5

Update by regions

1

## Routine work



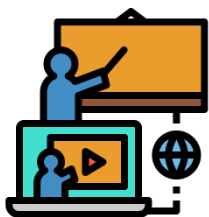
### Routine work

Routine work, except from university visits and inbound/outbound mobility, is operated daily as usual, taking for example, MoUs preparation and signing, curriculum mapping, research collaboration, database establishment, website development, as well as relevant reports and SOPs.



### Communication with partner universities

Communication with partner universities has no obstacle using email correspondence and teleconference options, such as, Zoom, Skype, and WebEx.



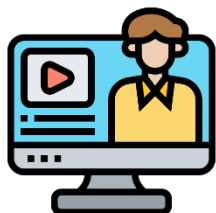
# Virtual Mobility/Educational Programs

2

IR Activities for  
New normal

## A. MU + Partner HEIs in Australia, East Asia & SEA

- A combination of virtual experience (Oct. – Dec. 2020) and physical experience (Jan. / Feb. 2021 – visit to Thailand and partner HEIs)
- Three nominated project advisors (one from each university).
- Project-based program, possibly linked with virtual internship opportunity
- More on academic (cultural experience to be added later on physical mobility part)
- Broad area of the topics, preferably business
- Credit bearing
- Participants of 20 undergraduate students from any academic disciplines; divided into small groups of 4 (from all participating HEIs)
- Teaching and learning methodology:
  - \* webinar to kick off the orientation
  - \* online courses (Live and VDO)
  - \* online workshop and progress submission
  - \* online presentation to select the winner



## Virtual Mobility/Educational Programs

2

IR Activities for  
New normal

### B. MU + Southeast Asian HEIs

- 100% virtual experience (at least 2 weeks starting from July/August 2020)
- Short-term mobility program – bridging gaps through cultural identity and intercultural differences under the umbrella of 21st century skills
- Non-credit bearing for NUS, but perhaps 2 credits awarded for MU students
- Participants of 15 - 20 undergraduate students from each university
- Teaching and learning methodology:
  - \* webinar to kick off the orientation
  - \* podcast episodes on selective 21<sup>st</sup> century skills
  - \* online courses (Live)
  - \* online group study and presentation
  - \* online cultural sessions and farewell party



## Pending Joint Research 2 Units



### MU – ETH Joint Research Unit

Swiss Federal Institute of Technology (ETH), Zurich, Switzerland



### Mahidol – Yale Gender Lab

Yale University, USA

3

## Joint Research Units

### Health Literacy Training Centre

Faculty of Public Health: Taipei  
Medical University, Taiwan

### Hamlyn-Bart Lab in Medical Robotics

Faculty of Engineering:  
Imperial College London, UK

### Smart Plant Factory and Horticulture

Faculty of Science:  
Chiba University, Japan

### Audio and Speech Therapy Southeast Asian Hub

Faculty of Medicine,  
Ramathibodhi Hospital:  
Macquarie University, Australia

### Medical Informatics Research Unit

Faculty of ICT, Faculty of Dentistry, Faculty  
of Medicine Ramathibodhi Hospital:  
University of Bremen, Germany



### Dental and Medical Device Research Centre

Faculty of Dentistry: National  
Chung Kung University, Taiwan

### Big Data System and Training on Genomic Epidemiology

Faculty of Tropical Medicine:  
Oxford University, UK

### Joint ICT Lab and Research Centre

Faculty of ICT: National Institute  
of Advanced Industrial Science  
and Technology (AIST), Japan

### Ageing and Chronic Diseases Pharmaceutical Centre

Faculty of Pharmacy:  
University of Liverpool, UK

### Viral Vector Service Unit

Faculty of Medical Technology:  
Institute for Functional Genomics  
Montpellier, France





- Support given to International Students during COVID-19

4

International students

Operated by **MUSAIS**

Mahidol University Student, Academic and International Services (MUSAIS)

**Undergraduate Students**

Students requested to return to their home countries:  
Faculties/ Colleges/ Institutes → International Relations Division and Education Administration Division

**Post-graduate Students**

Students requested to return to their home countries:  
Faculties/ Colleges/ Institutes → International Relations Division and Faculty of Graduate Studies

**Exchange Students**

Students have been instructed to return to their home countries as the online learning is in place.

**Short-term Students**

No students in this category left on campus

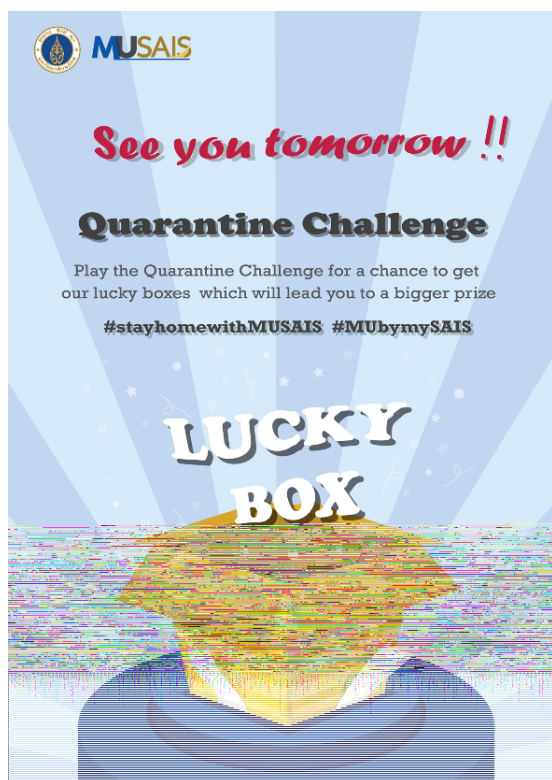
# Activities for the International Students during COVID-19 by MU-SAIS

4

International students

Focusing on online/ virtual activities that promote inter-cultural understanding among Thai and international students plus monthly webinar events in various topics

## Activities on Facebook Opinter Mahidol “Quarantine Challenge”



**MU R** Opinter Mahidol  
17 hrs · 🌐

MUSAIS by your side!!!!  
We are back with our new activity.  
Join in to win the Netflix gift cards, lucky boxes and more.

Play the Quarantine Bingo for a chance to get our lucky boxes which will lead you to the grand prizes (Netflix gift cards).

How to participate  
1. Be current student of Mahidol University who is residing in Thailand.... See more





## Internationalization with Partner Universities by Regions in 2020

5

Update by regions

### China and Taiwan

100%



Virtual Activity



Physical Activity



- Showing readiness to move on both virtual and physical activities

### Australia and New Zealand

70%



Virtual Activity



Physical Activity



- Showing readiness to move on virtual activities during the rest of the year and blend in physical activities next year when COVID-19 subsides

### Japan / South Korea / SEA / Other Countries / Europe / USA

50%



Virtual Activity



Physical Activity



- Showing readiness to re-start activities next year as they are still managing COVID-19 situation



## Japan

- Active on MoUs preparations
- All inbound and outbound activities eased in Fall 2020 with no sign of virtual mobility
- WFH being applied for the International Office at Osaka University while encouraging social responsibility activities at the hospitals in Osaka
- One student from Waseda University to join the exchange program in this coming September



## South Korea

- All mobility eased in Fall 2020

5

## Update by regions

## SEA

- In the process of MoUs extension with the University of Health Sciences in Laos

## Other Countries in Asia

- Inbound and outbound activities slowed down in India and Bangladesh due to severe COVID-19 situation in these two countries
- Active in email correspondence

## Europe and USA

- All physical mobility in Europe postponed till October 2020, while no confirmation from the USA
- Email correspondence to get in touch on MoUs establishment/ extension and prepare for future projects

## Readiness

50%



- Ready to re-start activities next year in 2021



Mahidol University  
*Wisdom of the Land*

THANK YOU

